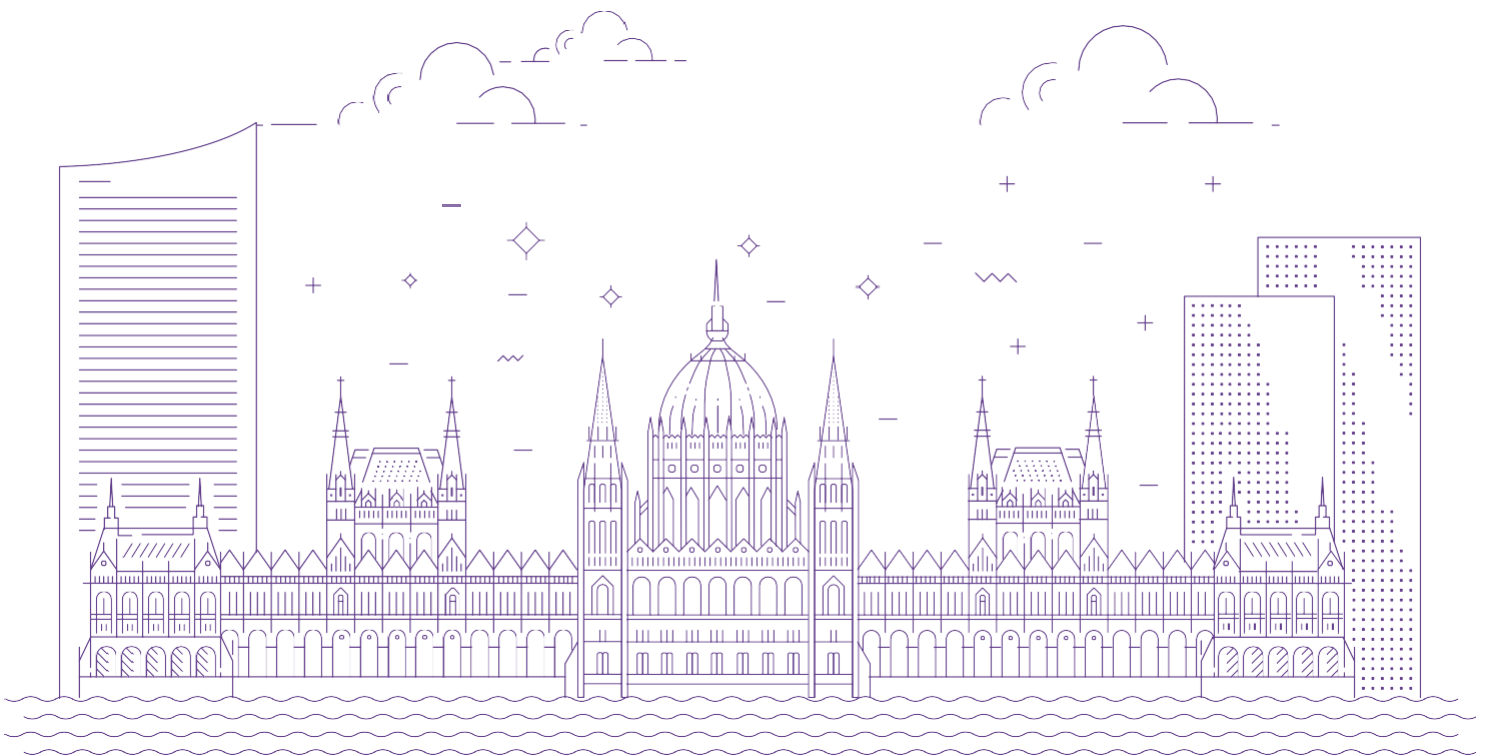


2022 Korean Global IT Market Pioneer (Budapest, Prague)

2022 글로벌 IT 시장개척단
부다페스트 / 프라하 수출박람회



2022 Korean Global IT
Market Pioneer
(Budapest, Prague)

2022 Korean Global IT
Market Pioneer
(Budapest, Prague)

수출상담회

Korean Premium Products
Trade Meeting

The Way.

The Company

KOPENS INC.

Robogram Artificial Intelligence Robot Research Institute, Inc.

LIHAI Company

IGIS

iTACT CO. LTD.

SCHAFFENGOTT CO., LTD.

ISCommunications Co., Ltd

Vinssen, Inc

MIT, Inc

4STEC Inc.

Motov

NJ company

LEO CO., LTD



The Way

PARTICIPANT	HAN SUKYOUNG
ADDRESS	101-503, 26, Cheongok-ro, Juchon-myeon, Gimhae-si, Gyeongsangnam-do, Republic of Korea
WEBSITE	thewayconsulting.co.kr
TEL	+82 10-3125-3550
E-MAIL	ceo@thewayconsulting.co.kr



COMPANY AND PRODUCT INFORMATION

The Way is a company specializing in artificial intelligence that has AI experts and is composed of a career development team with more than 10 years of experience. It is a company customized for the digital age as it is composed of various age groups from 20s to 50s. It has been selected for several national projects and is currently in the process of national projects, and its technologies include Smart Factory (Predic-M) and Gas Monitoring System (CACS). In addition, the representative and the Management Strategy Office are in charge of consulting, providing overall consulting to customers. Not only The Way, but also the subsidiary Total Wellness Co., Ltd. are operating together, so the healthcare technology operated by the subsidiary is also The Way's technology. We have a technology that is not only limited to Korea, but are in demand worldwide, so we are closely pursuing business with overseas investors, and we are establishing contacts and branches in Azerbaijan, Dubai, Hungary, and Mongolia.

- PREDIC-M stands for Predic-MRO. In other words, it is a system that automates maintenance, replacement, and operation with artificial intelligence algorithms.
- The gas safety monitoring system monitors the real-time environment (temperature, illuminance, humidity), movement, and gas leakage in normal times. In case of gas leakage or emergency, an alarm message is generated using SMS and the gas valve is automatically shut off through the actuator.

Predic - M	CACS

THE COMPANY

PARTICIPANT	PARK JONGCHEOL
ADDRESS	Changwon, South Gyeongsang
WEBSITE	bestco.kr
TEL	+82 10-6266-1909
E-MAIL	one@bestco.kr



COMPANY AND PRODUCT INFORMATION

- Resolve malfunction of existing fire detectors
- Identify fire, smoke, and sparks through AI learning
- 99% accuracy of testing by testing and certification
- Supply of wind power generation facilities for Doosan Heavy Industries




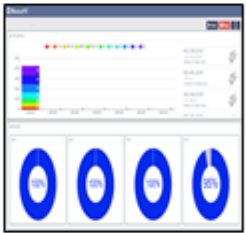

KOPENS INC.

PARTICIPANT	LEE SANGBOO
ADDRESS	Room 301, 3-dong, 21, Bongambuk 7-gil, Masanhoewon-gu, Changwon, Gyeongsangnam-do
WEBSITE	www.kopens.com
TEL	+82 10-4105-7711
E-MAIL	lsb@kopens.com

KOPENS®

COMPANY AND PRODUCT INFORMATION

- Plant Pulse - Various manufacturing data collection and monitoring S/W from the industry
- FACTORY FX - Small Business Process Management System
- REAL Display - Real-time data collection and event analysis S/W
- Edge Gateway - High Performance Big Data Fast Collection Middleware S/W

Plant Pulse	FACTORY FX	REAL Display
		




Robogram Artificial Intelligence Robot Research Institute, Inc.

PARTICIPANT	SUNG CHANGKYUNG
ADDRESS	No. 116 of Engineering Building 6, Gangwon University-gil 1, Chuncheon-si, Gangwon-do
WEBSITE	www.robogram.kr
TEL	+82 10-9980-4871
E-MAIL	scko2255@naver.com



COMPANY AND PRODUCT INFORMATION

- : Create a learning model by collecting image data. Machine learning experience class to check the results learned with the given verification data
- AI Blockcoding App for Smartphones
Collect image data using a smartphone for machine learning experience education. A mobile-only block coding app that can be processed and learned
- PC-based AI avatar coding app
In machine learning coding education, which collects, processes, and trains image data with a camera to create a learning model and applies new data to predict results, a cloud-based block coding app developed so that coding results can be output through three-dimensional device avatars on the web
- IOT device kit that enables AI coding education without PC
Coding education to practice machine learning through the process of collecting image data to create a learning model and predicting results using the model through various project learning

AI Coding App for smartphones	PC-based avatar coding app	Smart AI coding devices
		

LIHAI Company

PARTICIPANT	CHU HAESEONG
ADDRESS	Gyeongju, Gyeongbuk, Gyeongsangnam-do, Republic of Korea
WEBSITE	www.lihai.co.kr
TEL	+82 10-6568-2429
E-MAIL	hs.chu@lihai.io



COMPANY AND PRODUCT INFORMATION

1) AI image analysis drone system

- Video analysis is possible even at 50m, which is 5 times higher than the intelligent cctv used at the existing 10m altitude.
- It is possible to detect and analyze objects needed by users rather than simply monitoring images.
- It is possible to notify the user immediately upon detection of an event, saving manpower, time, and cost
- The image analysis module can be mounted on all drones and there is no need to purchase a separate drone



2) Korean Cultural Resources 3D Data Sharing Platform

[Figure] Korean 3D data sharing platform photo

- Among 3D model data currently used in metaverse, games, animation, etc., Korean and traditional data are directly designed and processed to provide content that can be developed and utilized immediately.
- In addition, it is a platform service that can utilize Unreal, Unity, etc. by processing Korean cultural heritage into large-scale 3D modeling through drones.

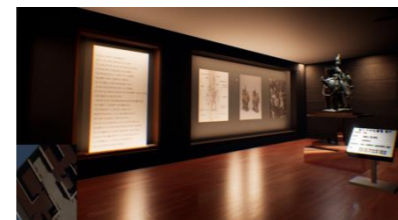


Image analysis system using drones	Korean 3D asset sharing platform	

IGIS

PARTICIPANT	LEE HODONG
ADDRESS	3F, 232, Alphacity 1-ro, Suseong-gu, Daegu, Republic of Korea
WEBSITE	www.igis.co.kr
TEL	+82 10-8326-1530
E-MAIL	idscoreal@naver.com



COMPANY AND PRODUCT INFORMATION

- Dfos solution(drone solution): A drone solution configured to set up and operate a drone, shoot, and manage data all at once through user-based design
- Dfos Panorama(panorama service): A panoramic service developed to enable 360 panoramic shooting using drones.
- Dfos IMS(Image Management System): Drone image (sheet photo, foreground photo, video, orthographic image) registration search and viewing

Dfos	Dfos Panorama	Dfos IMS



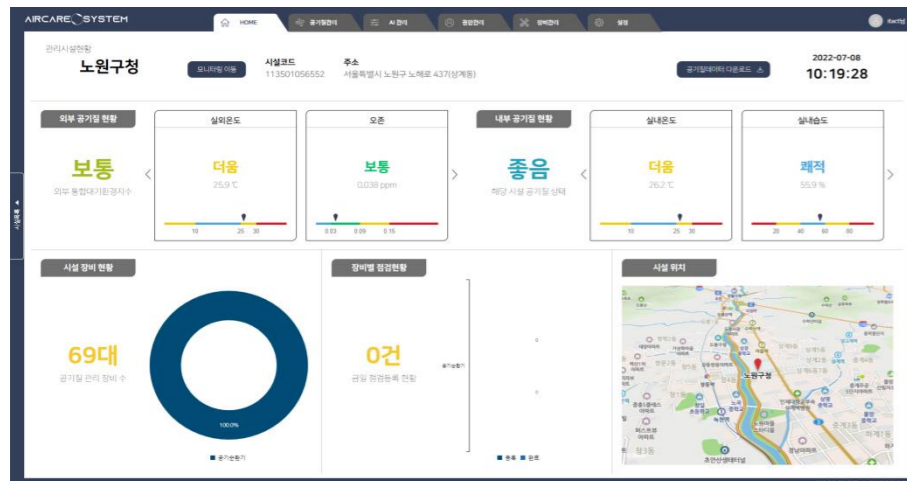
ITACT CO. LTD.

PARTICIPANT	KIM MINSEON
ADDRESS	304, 21, Jungang-ro 14-gil, Jeju-si, Jeju-do, Republic of Korea
WEBSITE	www.itact.co.kr
TEL	+82 10-4221-5039
E-MAIL	kms5039@itact.co.kr



COMPANY AND PRODUCT INFORMATION

- Collecting air quality data measured by indoor air quality sensors
- Integrated control of air quality improvement devices (air circulator, air purifier, system air conditioner, etc.) for optimal indoor air quality
- Visually communicate changes in indoor air quality through a web-based dashboard



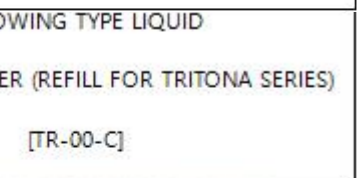
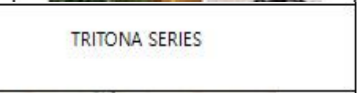
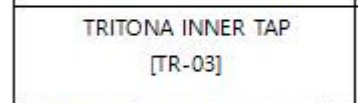
SCHAFFENGOTT CO., LTD.

PARTICIPANT	KWON IKHWAN
ADDRESS	102-1203, 28 Centum 1-ro, Haeundae-gu, Busan, KOREA
WEBSITE	www.schaffengott.com
TEL	+82 10-8639-6833
E-MAIL	ceo@schaffengott.com



COMPANY AND PRODUCT INFORMATION

- Presidential Award on the 1st Procurement Day, Ministry of Science and ICT Award (for 2times), Ministry of Trade, Industry and Energy Award, IF Design Award in Germany for the year 2019, 2021 and 2022, etc.
- Advanced Artificial Intelligence-powered Smart Home (City) Daily Care Appliance Tritona has been done development and testbed in Silicon Valley, USA for 5 years. Artificial Intelligence (AI) algorithm technology is applied to our product to maximize precision, minimize malfunction of fire detection and notify criminal cases, fire, disaster, injuries, deceases or any emergency situations. These emergency situations will be sent to our control room, users' mobile application and family contacts. Users can utilize our Tritona to extinguish the fires, extract smoke and secure an escape route if they are in fire.
- Tritona is the IoT based Smart Fire Extinguisher can be used for monitoring for fire and criminal cases. It improved the problems of conventional fire extinguishers such as powder hardening, heavy-weighted, complex of usage and etc. After launching, it was selected as innovative products by Public Procurement Service Korea. We are also officially certified vendor for Korea Army. Tritona has been supplying to more than 500 Korea government agencies such as Incheon Airport, Korea minting, Nuclear Power Plant, Sejong Government Complex, Korean Navy, Korea Marine Corps, Korea Maritime Police and etc.
- We provide solutions with AI and IoT technologies applied products for smart home, smart city, smart village, insurtech, mobility, living-alone household, Schools, Daycare, Pregnant women Facilities, Elderly People Facilities, Crime Vulnerable Facilities and Households
- We have more than 60 Intellectual Property Rights and verified B2G references
 - Exported to Thermal power plant and Hydro power plant in Indonesia
 - Based on records for Korea and UN procurement markets, are proceeding to enter US procurement market, B2B and B2C markets in overseas
 - Currently, we are in discussion for joint venture with Vietnam and Middle East countries
 - Selected as seller in Amazon Launchpad for US and EU markets
 - Signing MOU with UN Habitat
 - We are involved in Official Development Assistance (ODA)



ISCommunications Co., Ltd

PARTICIPANT	PARK SANGWOOK
ADDRESS	1010, Busan Digital Valley, 303 Deadong-ro, Sasang-gu, Busan, 46981, Rep. of KOREA
WEBSITE	www.iscom.co.kr
TEL	+82 10-5019-6601
E-MAIL	psw@iscom.co.kr



COMPANY AND PRODUCT INFORMATION

- U-Pointer is an interactive solution to enable projector or TV to use as IWB (Interactive white board). This U-Pointer is easy to mount and use. It's external light interference and accuracy performance is top grade that in any classroom circumstance, it could be used without any trouble.
- i-Pro is an annotation & contents creating tool specialized for education and enterprise. User can make interactive presentation with rich functions and create contents anywhere, anytime with very easy method. This i-Pro supports most of OS and PC sources, PC, Laptop, PAD etc.
- O-pen.tv is an online contents service platform. User can upload contents easily and set pay/free, degree or method to open the contents that could be used in various field. View just select contents and click, then without any media player, this contents is played on any devices, PC, Smartphone, PAD, etc. The important feature is to service contents with high resolution even under bad internet circumstances.

U-pointer	i-Pro	O-pen.tv

Vinssen, Inc

PARTICIPANT	LEE CHILHAN
ADDRESS	Yeongam-gun, Jeollanam-do, Republic of Korea
WEBSITE	www.vinssen.com
TEL	+82 10-9071-2145
E-MAIL	chlee@vinssen.com



COMPANY AND PRODUCT INFORMATION

- 8.2M Leisure Boat 'Epoch'



length: 8.2 M	height: 2.63 M	weight: 4,082 Kg
speed: 25 Knots	Passenger capacity: 5	hull: aluminium or FRP

The 8.2m leisure boat 'Epoch' is an electric propulsion vessel that was developed in 2019 and was awarded the 'Boat of the Year Award' at the 2019 Busan International Boat Show. The design and the technical performance of Epoch were upgraded, and it was presented along with the naming ceremony at 2021 Busan International Boat Show.

- 10M Leisure Boat 'Hydrogenia'



length: 10 M	height: 2.9 M	weight: 7,700 Kg
speed: 10 Knots	Passenger capacity: 6	hull: aluminium or FRP

Hydrogenia, a hydrogen-powered boat that is about to be commercialized for the first time in Korea, was exhibited at 2021 Busan International Boat Show with a naming ceremony and won the 'Boat of Year Grand Prize'.


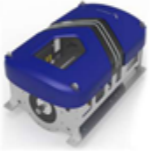
Hydrogenia is demonstrated on the project 'The POC(Proof of Concept) of an Eco-Friendly Small Vessel Using a Hydrogen Fuel Cell

Propulsion System' at the Ulsan Hydrogen Fuel Cell POC Center. Visiting the center, President Moon Jae-in boarded it and became a nationwide headline.







○ FCM(Fuel-Cell Module)

○ EPM: Electric Propulsion Module

 <p>FCM: Fuel-Cell Module</p>	 <p>EPM: Electric Propulsion Module</p>
<ul style="list-style-type: none"> - Pre-assembled fuel-cell module for generating the electricity required for the ship - Composition of fuel-cells, BOPs, DCDC converter, frame and external monitoring panel 	<ul style="list-style-type: none"> - an integrated Marine electric Propulsion Module - Configuration of an electric motor, power conversion system (DCDC converter, inverter, filter) and aluminum hull - Patent application in August 2019

○ LIB(Lithium-Ion Battery)

	<ul style="list-style-type: none"> - A power supply to electric propulsion systems for ships or storage for some power generated by fuel cells or other generation systems - Suitable for ships by applying BMS and diverse protective systems - Received Type Approval for battery module by Korean Register (KR) - Expecting Type Approval for battery system suitable for medium and large ships,
--	--

FCM (Fuel-cell Module System)	EPM (Electric Propulsion Module System)	LIB (Lithium-Ion Battery)
		

MIT, Inc

PARTICIPANT	CHOI RYUL
ADDRESS	Ulsan, South Korea
WEBSITE	www.magicit.co.kr
TEL	+82 10-8532-4368
E-MAIL	ryul@magicit.co.kr

COMPANY AND PRODUCT INFORMATION

○ Magic-Factory

Establishment of customized MES for customers through accurate business analysis of experts by industry domain

Establishing a predictive maintenance system by linking and analyzing real-time facility data with the MES system

Real-time monitoring of the overall manufacturing status of production, equipment, quality, and logistics at the manufacturing site, providing functional support for quick response to abnormal phenomena

Support to manage human resources suitable for production target by identifying the degree of productivity increase or decrease according to the utilization of workers or managers

Support for efficient production process operation by identifying the stock status and quality status of raw materials, subsidiary materials, and parts used in the production process

Establish an optimal production system to perform a smooth production process by periodically checking the operating status of equipment and equipment installed in the production plant, such as production history, and the age of use of the equipment

○ Meta-Solution

Reduced facility down-time due to systematic guidance in the event of a complex facility failure due to the introduction of a non-face-to-face collaboration system

Minimize access to hazardous areas through remote monitoring to reduce worker safety accident rate and reduce the burden of repetitive facility inspections

Reduction of maintenance work time by introducing real-time remote expert support system and improvement of productivity and reduction of worker risk by quick problem solving

Prevention of safety accidents due to early detection of facility problems and reduction of operator judgment errors through AR-based real-time information visualization, and real-time management of inspection history to secure accident history traceability

Reduced production time and cost by 90% compared to existing document- based work orders

Simplifies content creation and intuitively understands the work process for field workers

o Magic-Farm

By applying ICT smart technology to crop cultivation, automation and remote control are possible smart greenhouse, smart fruit tree, smart container cultivation, etc.

Measure and analyze temperature, humidity, amount of sunlight (light), etc., and according to the analysis result, the control device is remotely controlled with a mobile device to change to an appropriate state

Monitoring growth information based on XR and managing all facilities to maintain the best condition

Maintain and manages the optimal growth environment for crops by monitoring temperature, humidity, CO2, etc. of the greenhouse through PC or mobile and remotely controlling window opening and closing and nutrient supply

(Magic-Factory) (Meta-Solution) (Magic-Farm)



4STEC Inc.

PARTICIPANT	LEE SEUNGWON
ADDRESS	Room 709, 30, Gaseok-ro, Seo-gu, Incheon
WEBSITE	www.4stec.com
TEL	+82 10-3756-2652
E-MAIL	ceo@4stec.com



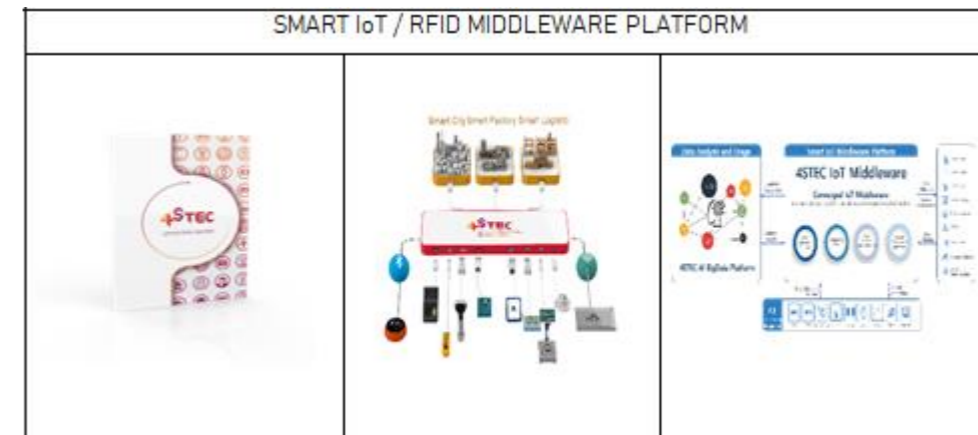
COMPANY AND PRODUCT INFORMATION

o SMART IoT/RFID MIDDLEWARE PLATFORM

- It is a convergence IoT middleware that can control and monitor IoT-based HW (RFID, BLE, Beacon) equipment. IoT sensing equipment (barcode, RFID, NFC, BLE, beacon, GPS, temperature sensor, humidity sensor, motion sensor, wearable equipment, smart device) can be optimized through convergence IoT S/W. We provide solutions for smart city using ai and big data, safety management system for hazardous facilities, production facility management system, records management system, smart forklift management system, goods management system, and smart management system.

- In the era of digital transformation (DX/DT), it is more necessary than ever to digitize the existing documented data, collect a lot of IoT sensing data, convert it into a standardized form, integrate it, and link it with the main system. 4STEC's SMART IoT/RFID middleware platform is the only program that performs this function and converges/unifies data so that it can be implemented as a desired service.

- SMART IoT/RFID middleware platform integrates and manages the data of various devices with one middleware, and by integrating/analyzing the data and processing it into the desired form, it plays a role of connecting the data so that the service desired by the customer is well implemented. do. It unifies functions by unifying them, providing efficiencies, reducing costs, optimizing them, and providing scalability to add multiple IoT devices.



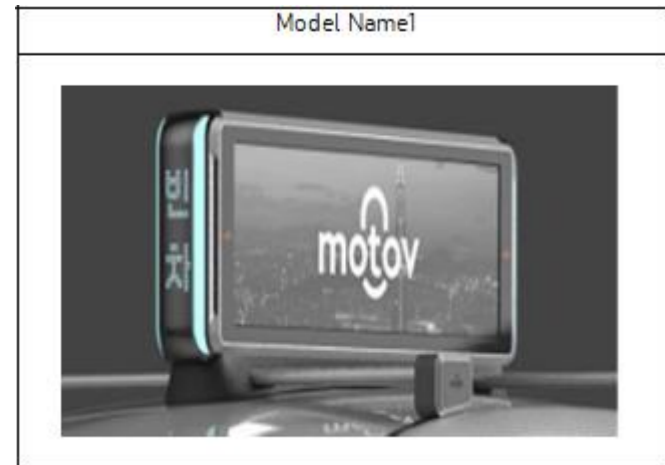
Motov

PARTICIPANT	LIM WOOHYEOK
ADDRESS	Songdo ommhwa-ro 199, B-1, 1023 Yeonsu-gu, Incheon
WEBSITE	www.motov.co.kr
TEL	+82 10-9074-2447
E-MAIL	woohyeok.lim@motov.co.kr



COMPANY AND PRODUCT INFORMATION

- The MOTOV device has over 34 Mobility-based IoT sensors installed in and on the VRD, gathering 50 types of city data in real-time.
- MOTOV VRD display is high on durability for brightness, screen resolution, and stable long-term usage within the outside environment. It can also flexibly project the desired images and videos of the ad content.
- The IoT sensors within the VRD implement the data of the current location and floating population collected in real-time to project relevant ads for the environment.



NJ company

PARTICIPANT	HONG MIHYE
ADDRESS	26, Doam-gil, Seongsan-myeon, Gunsan, Jeollabuk-do
WEBSITE	www.fountainauto.modoo.at
TEL	+82 10-2975-0134
E-MAIL	njjoo@njcompany.co.kr



COMPANY AND PRODUCT INFORMATION

- Prevention device
- Pest control
- Nebulizer
- Game controller

Model Name1	Model Name2	Model Name3

LEO CO., LTD

PARTICIPANT	EO JEONGSEON
ADDRESS	1310-23, Cheongnam-ro, Nami-myun, Seowon-gu, Cheong-ju City, Chungbuk, Rep of Korea.
WEBSITE	www.leobio.co.kr
TEL	+82 10-3460-3511
E-MAIL	www.leobio.co.kr



COMPANY AND PRODUCT INFORMATION

- Apply with Safety Anti-virus functional 405nm LED
- Excellent Effectiveness for Optical LENS with wide angle
- Anti-virus device with functional UV-C LED indoor.
- Test Completed of COVID-19; Jeon-buk National Univ., South Korea.(2021)

High Functional Anti-Virus LED Lighting	UV-C Air Sterilizer
	

MEMO

